

Original BMW Accessories.

Installation instructions.



Retrofit iPod Interface

MINI ONE (R50)

MINI COOPER (R50)

MINI CONVERTIBLE (R52)

MINI COOPER S (R53)

Retrofit kit No.: 65 41 0 409 612 Retrofit kit iPod Interface

Installation time

The installation time of approx. 0.75 hours can vary depending on the condition and equipment of the vehicle.

Important information

These installation instructions are mainly intended for use in the MINI dealership network and by authorised BMW Service Centres.

The target group of these installation instructions are technical personnel trained on MINI vehicles with corresponding technical know-how.

All work is to be carried out with the aid of currently valid MINI repair instructions, schematic circuit diagrams, maintenance manuals and working instructions in rational order with the specified tools (special tools) while paying particular attention to valid safety regulations.

To avoid unnecessary extra work and/or costs, if any installation or function problems occur, after a brief troubleshooting session (approx. 0.5 hours), contact the following:

- 1. Either your national sales company or your regional office or**
- 2. The Support team via the Aftersales Assistance Portal (ASAP) using the optional technical parts support application.**

Quote the VIN and the part number of the retrofit kit and provide a detailed description of the problem.

Do not archive the printout of these Installation Instructions as daily updates are conducted through ASAP!

The plugs on the CD changer must be disconnected and tied back on cars with SA 672 (CD changer).

Refer to ASAP for explanations of the pictographs.

All illustrations show LHD vehicles. Carry out the same procedure analogously on RHD vehicles.

Pictographs:



identifies information that draws attention to danger/hazards.



identifies information that draws attention to specific requirements.

◀ identifies the end of an information or warning text.

Subject to technical modifications.

When installing cables/lines, particular attention must be paid to ensure that they are not bent, kinked or damaged. The costs incurred will not be reimbursed by BMW AG.

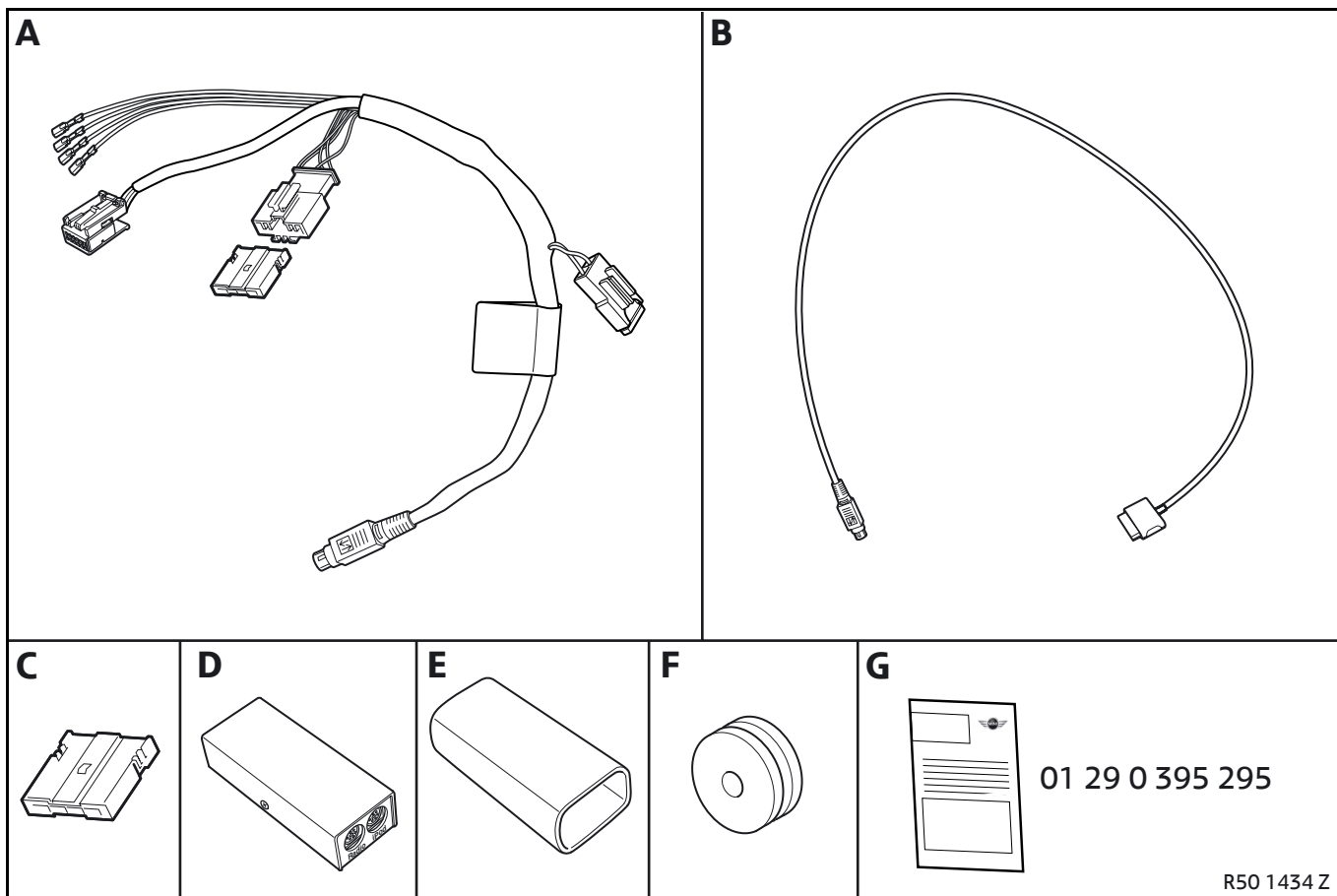
Required special tools

None

Contents

Section	Page
1. Parts overview	3
2. Preparatory work	4
3. Installing iPod Interface	5
4. Finishing off and encoding	7
5. Schematic circuit diagram/wire colours	8

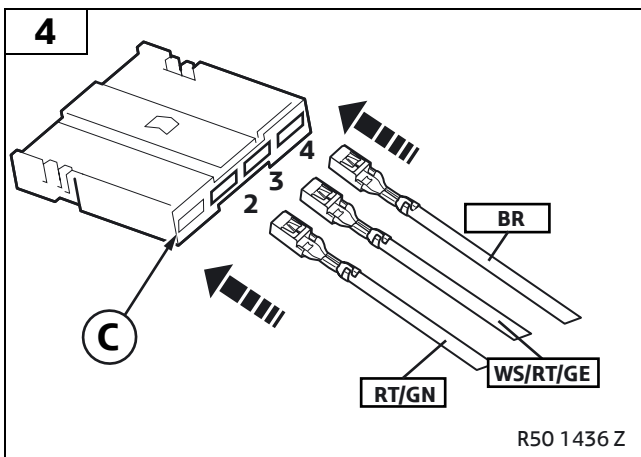
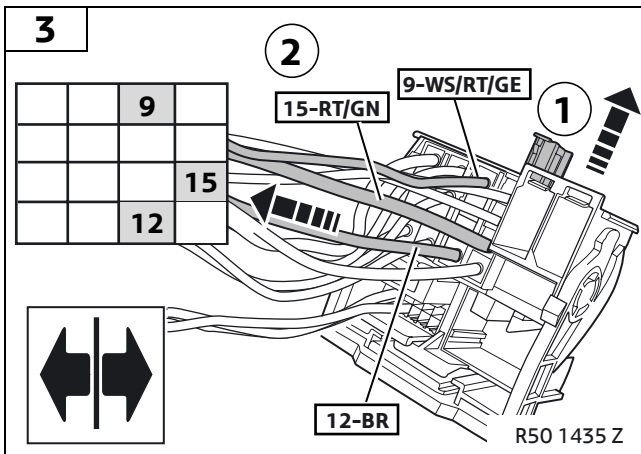
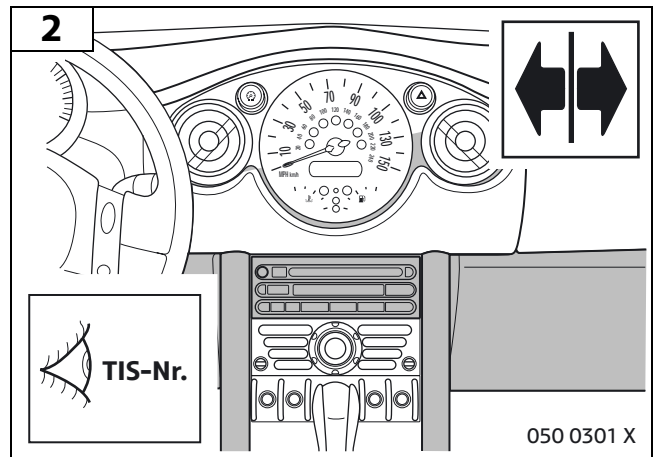
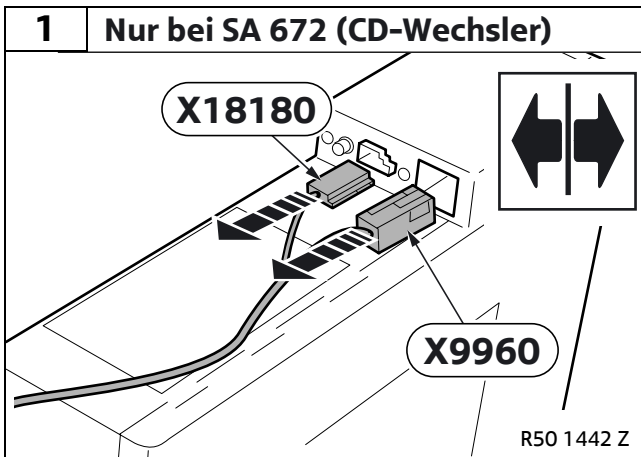
1. Parts overview



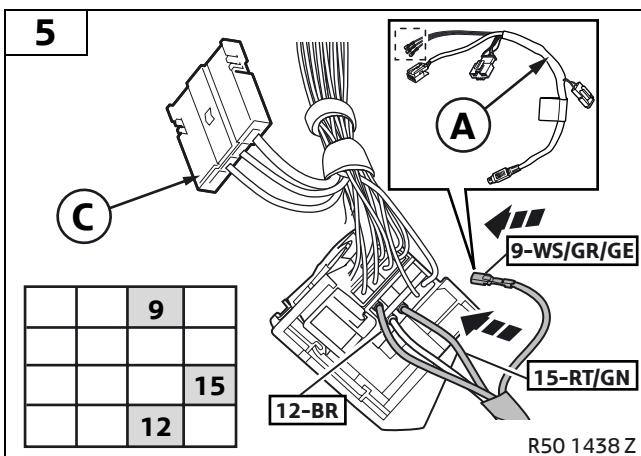
2. Preparatory work

	TIS No.
Perform quick test	---
Disconnect negative terminal of battery	12 00 ...
Remove the following components	
Radio	65 11 030
Glove compartment	51 16 360
Disconnect the CD changer (cars with SA 672 only)	65 11 070

3. Installing iPod Interface

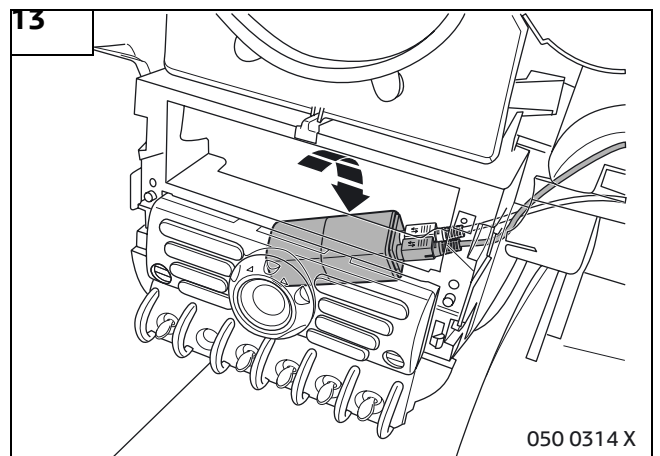
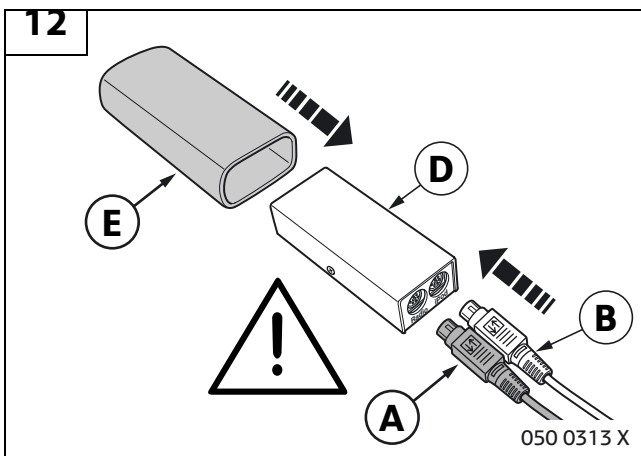
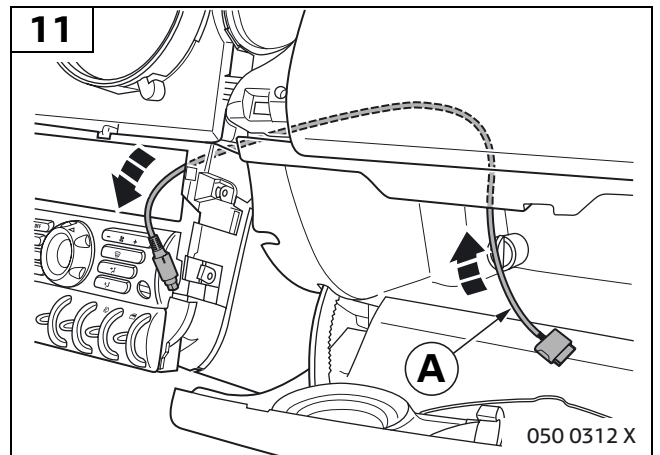
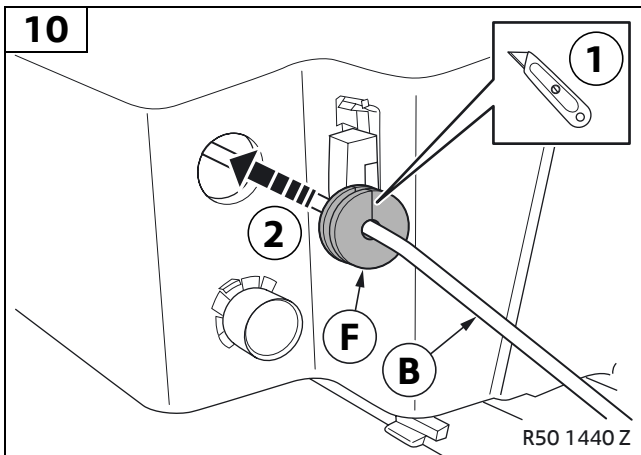
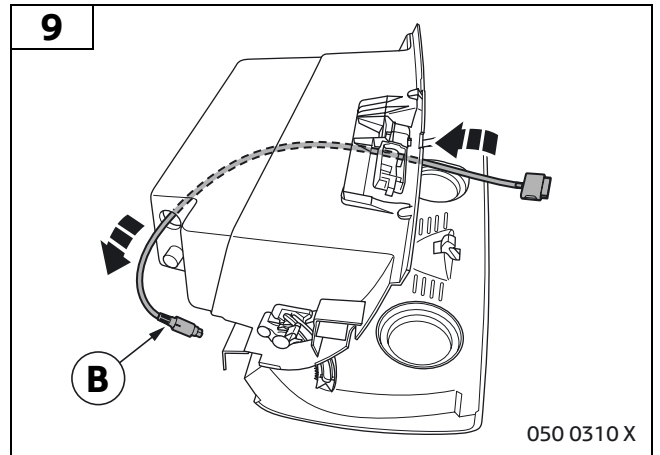
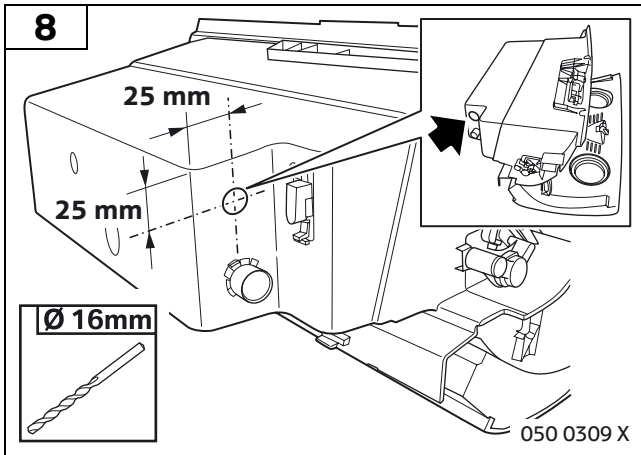
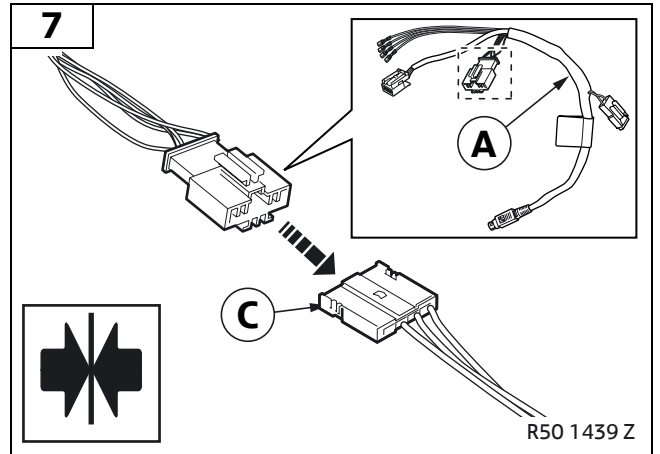
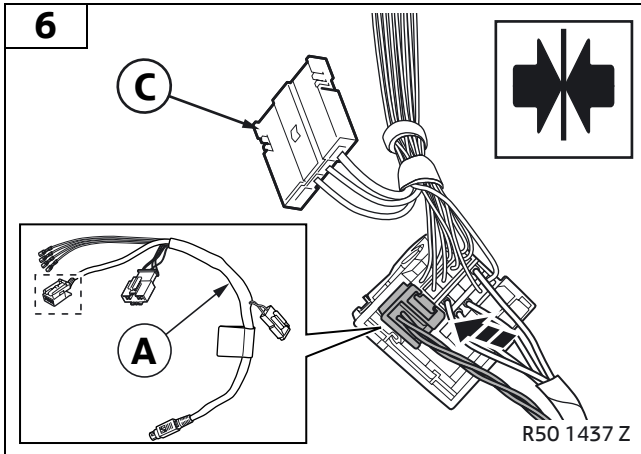


PIN number	Description
2	Terminal 30
3	I/K-bus
4	Terminal 31



PIN number	Description
9	I/K-bus
12	Terminal 31
15	Terminal 30

3. Einbau iPod Interface

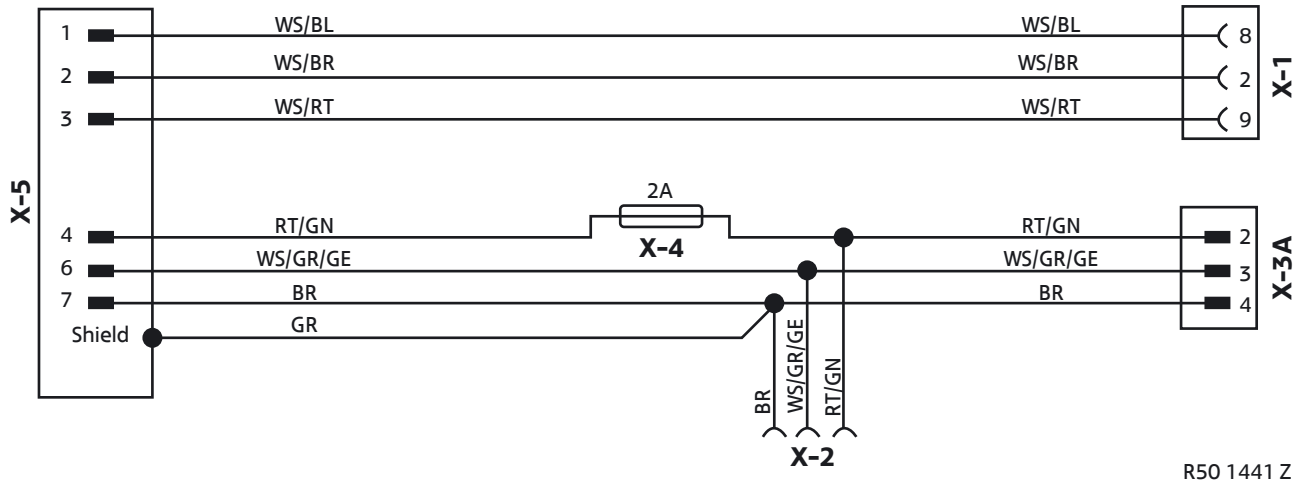


4. Finishing off and encoding

The retrofit system does not require encoding.

- Reconnect battery
- Perform quick test
- Reassemble vehicle in reverse order of removal.

5. Schematic circuit diagram / wire colours



R50 1441 Z

Key

- X-1** Connection, radio
- X-2** Connection, MPQ socket contact
- X-3A** Connection, 4-pin
- X-4** Connection, fuse (2 A)
- X-5** Connection, 7-PIN DIN connector

Wire colours

BL	Blue
BR	Brown
GE	Yellow
GN	Green
GR	Gray
RT	Red
SW	Black
VI	Violet
WS	White